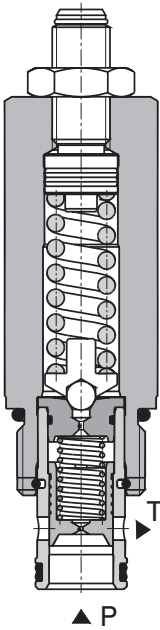


Pressure Relief Valve, Spool Type, Pilot Operated

**SR4A-B2**

7/8-14 UNF •  $Q_{max}$  100 l/min (26 GPM) •  $p_{max}$  350 bar (5100 PSI)



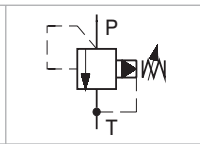
**Technical Features**

- › Low hysteresis, accurate pressure control and low pressure drop through CFD optimized flow paths
- › Wide pressure range up to 350 bar
- › High flow capacity
- › Hardened precision parts
- › Ideal for use as control valve where accuracy and repeatability is required
- › Adjustable by allen key hand screw
- › In the standard version, the valve is zinc-coated for 240 h protection acc. to ISO 9227

**Functional Description**

A pilot operated, spool type hydraulic relief valve in the form of a screw-in cartridge intended for use as a pressure limiting device. Fast-acting with low hysteresis. Because of the absence of any internal seals, the valve shows excellent reseating and repeatability characteristics. It may be used as a main pressure control element but due to its two stage design it is not recommended for safety applications where operating speed is critical.

Symbol

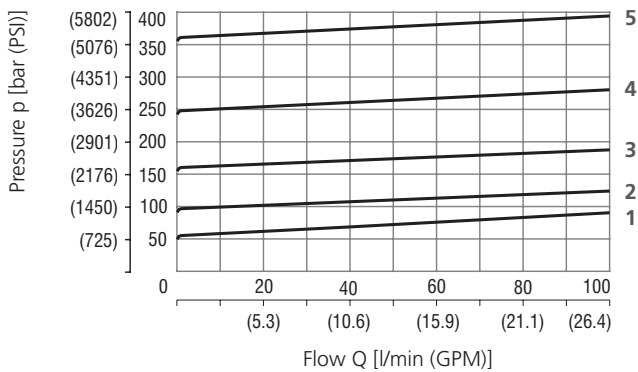


**Technical Data**

Valve size / Cartridge cavity		7/8-14 UNF-2A / B2 (C-10-2)	
Max. flow	l/min (GPM)	100 (26)	
Max. operating pressure	bar (PSI)	350 (5080)	
Max. pressure (T port)	bar (PSI)	100 (1450)	
Fluid temperature range (NBR)	°C (°F)	-30 ... +100 (-22 ... 212)	
Fluid temperature range (FPM)	°C (°F)	-20 ... +120 (-4 ... 248)	
Weight	kg (lbs)	0.24 (0.53)	
		Datasheet	Type
General information		GP_0060	Products and operating conditions
Valve bodies	In-line mounted	SB_0018	SB-B2*
	Sandwich mounted	SB-04(06)_0028	SB-*B2*
Cavity details / Form tools		SMT_0019	SMT-B2*
Spare parts		SP_8010	

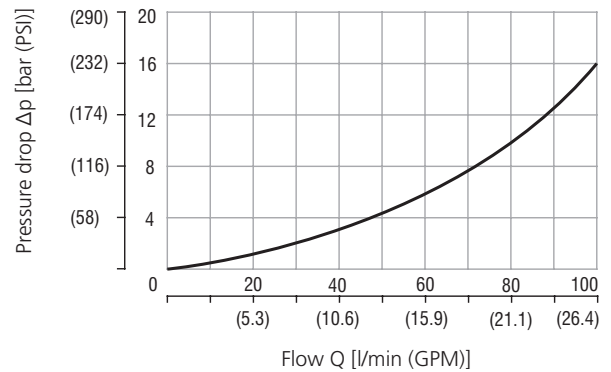
**Characteristics** measured at  $v = 32 \text{ mm}^2/\text{s}$  (156 SUS)

**Relief pressure related to flow rate**



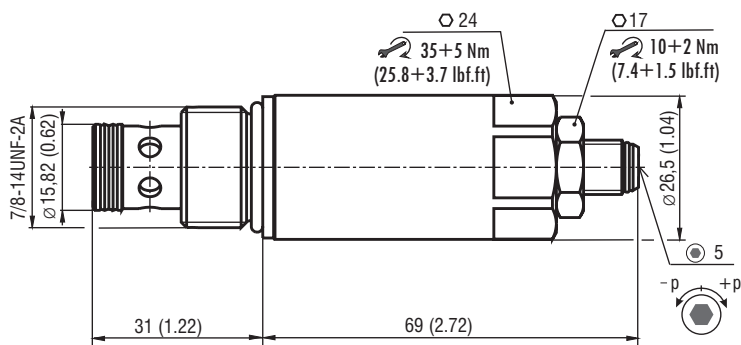
	Pressure range
5	35
4	25
3	16
2	10
1	6

**Minimum set and circulation pressure**

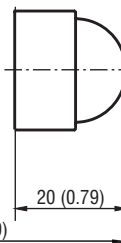


**Dimensions** in millimeters (inches)

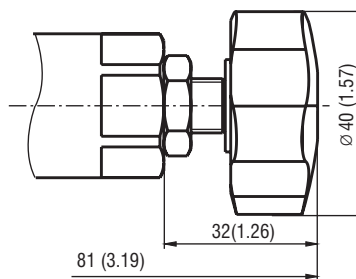
**Model S**



**Model T**



**Model RP**



**Ordering Code**

SR4A-B2 / H [ ] [ ] [ ] - [ ]

**Pressure relief valve, spool type, pilot operated**

**Valve cavity**  
7/8-14 UNF (C-10-2)

**Model**  
High performance

**Pressure range**  
up to 63 bar (910 PSI)      **6**  
up to 100 bar (1450 PSI)    **10**  
up to 160 bar (2320 PSI)    **16**  
up to 250 bar (3630 PSI)    **25**  
up to 350 bar (5080 PSI)    **35**

**Surface treatment**  
**A** zinc-coated (ZnCr-3), ISO 9227 (240 h)  
**B** zinc-coated (ZnNi), ISO 9227 (520 h)

**No designation**  
**V**

**Seals**  
NBR  
FPM (Viton)

**Adjustment option**  
allen key (hex. 5), without protective cap  
allen key (hex. 5), with protective cap  
hand screw, plastic

**S**  
**T**  
**RP**