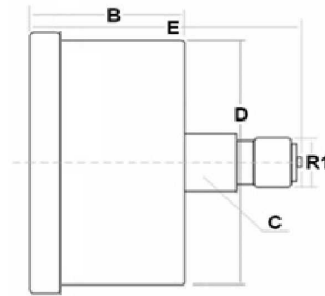


Pressure and vacuum gauges

Pressure gauges

## Pressure gauge DN 63 rear connection without flange, with glycerin (1/4" BSP)

Page: 1/2



**Accuracy:** 1,60%

**Dimensions:** B=29  
C=14  
D=62  
E=53

**Temperature:** from -20 up to +60°C

**Material:** Case: stainless steel  
Ring: stainless steel  
Window: polycarbonate (glass)  
Socket & Connection: brass

Part n°	R1	Scale (bar)
MFI6304001-DBSB	1/4" BSP	0-1
MFI63042.5-DBSB	1/4" BSP	0-2.5
MFI6304004-DBSB	1/4" BSP	0-4
MFI6304006-DBSB	1/4" BSP	0-6
MFI6304010-DBSB	1/4" BSP	0-10
MFI6304012-DBSB	1/4" BSP	0-12
MFI6304016-DBSB	1/4" BSP	0-16
MFI6304020-DBSB	1/4" BSP	0-20
MFI6304025-DBSB	1/4" BSP	0-25
MFI6304040-DBSB	1/4" BSP	0-40
MFI6304060-DBSB	1/4" BSP	0-60
MFI6304100-DBSB	1/4" BSP	0-100
MFI6304160-DBSB	1/4" BSP	0-160
MFI6304250-DBSB	1/4" BSP	0-250

Pressure and vacuum gauges

Pressure gauges

## Pressure gauge DN 63 rear connection without flange, with glycerin (1/4" BSP)

Page: 2/2

Part n°	R1	Scale (bar)
<b>MFI6304315-DBSB</b>	1/4" BSP	0-315
<b>MFI6304400-DBSB</b>	1/4" BSP	0-400
<b>MFI6304600-DBSB</b>	1/4" BSP	0-600