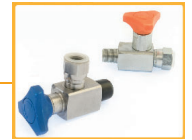


Catalogo Generale . General Catalogue



I rubinetti esclusori sono normalmente utilizzati a protezione del manometro. Doppia funzione:

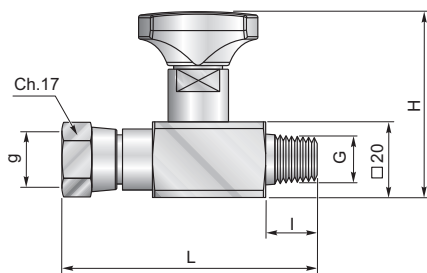
- Smorzare lo shock della pressione in fase di apertura
- Isolare lo strumento dalla linea in pressione

Il dado girevole permette al manometro di essere orientato a piacimento e la presenza dell'OR al suo interno impedisce il trafileamento di fluidi tra il manometro e l'esclusore.

The anti-shock valves are normally used to protect the pressure gauge with a double function:

- To dampen the pressure surge during the opening
- To isolate the instrument from the system's pressure line

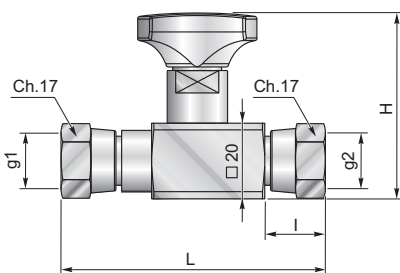
The gauge can be oriented thanks to the rotating swivel nut and the internal o-ring here inserted prevents any fluid leakage between the gauge and the fitting.

Esclusore attacco diritto girevole
Anti-shock valve swivel straight connection


G	g	H	L	I	PN [bar]	Codice/Ref.
ISO 7/1 R 1/4" *	ISO 228 G1/4" #	46	60	14	400	ES180ZL

#Tenuta per manometro con o-ring/
gauge sealing with o-ring

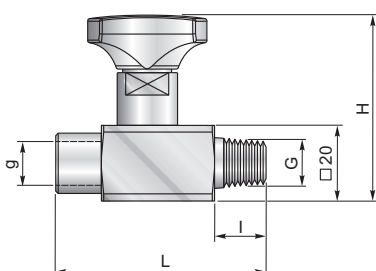
*Disponibili in INOX /
Available in Stainless steel

Esclusore attacco diritto doppia femmina girevole
Anti-shock valve double swivel straight connection


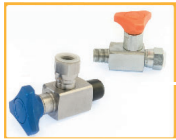
g1	g2	H	L	I	PN [bar]	Codice/Ref.
ISO 228 G1/4" *#	ISO 228 G1/4" #	46	62	16	400	ES18GLZ
ISO 228 G1/4" #	ISO 228 G1/4" 60°	46	55.5	16	400	ES18GFZL

*Disponibili in INOX /
Available in Stainless steel

#Tenuta per manometro con o-ring/
gauge sealing with o-ring

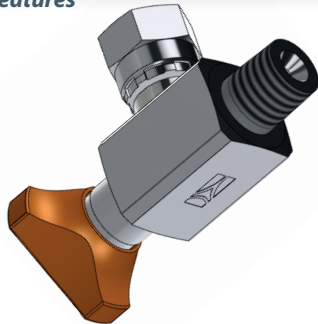
Esclusore attacco diritto fisso
Anti-shock valve fixed straight connection


G	g	H	L	I	PN [bar]	Codice/Ref.
ISO 7/1 R 1/4"	ISO 228 G1/4"	46	58.5	14	400	ES18FZL
ISO 7/1 R 1/4"	ISO 7/1 R 1/4"	46	58.5	14	400	ES18FRZL
1/4" - 18 NPTF	1/4" - 18 NPTF	46	58.5	14	400	ES18FNZL



Caratteristiche generiche

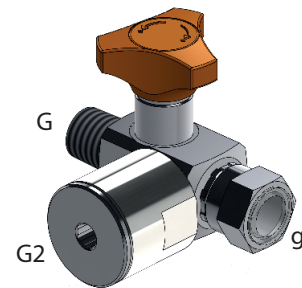
General features



- Zincato superficilmente
- Identificazione produttore attraverso il logo
- Superficially zinc-plated
- Manufacturer's identification through our logo

Esclusore attacco 3 vie

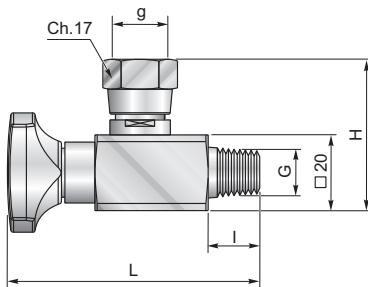
Anti-shock valve 3-way connection



G	g	G2	PN [bar]	Codice/Ref.
ISO 7/1 R 1/4"	ISO 228 G1/4" #	ISO 228 G1/2"	400	ES180G12LZ
#Tenuta per manometro con o-ring/ gauge sealing with o-ring				

Esclusore attacco 90°

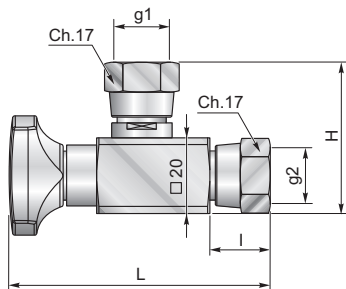
Anti-shock valve 90° connection



G	g	H	L	I	PN [bar]	Codice/Ref.
ISO 7/1 R 1/4" *	ISO 228 G1/4" #	40	68	14	400	ES090LZ
#Tenuta per manometro con o-ring/ gauge sealing with o-ring						
*Disponibili in INOX / Available in Stainless steel						

Esclusore attacco 90° doppia femmina girevole

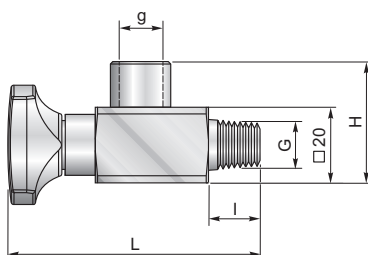
Anti-shock valve 90° double swivel connection



g1	g2	H	L	I	PN [bar]	Codice/Ref.
ISO 228 G1/4" *#	ISO 228 G1/4" #	40	68	16	400	ES09GLZ
ISO 228 G1/4" #	ISO 228 G1/4" 60°	40	68	16	400	ES09GFLZ
*Disponibili in INOX / Available in Stainless steel						
#Tenuta per manometro con o-ring/ gauge sealing with o-ring						

Esclusore attacco fisso 90°

Anti-shock valve fixed 90° connection



G	g	H	L	I	PN [bar]	Codice/Ref.
ISO 7/1 R 1/4"	ISO 228 G1/4"	40	68	14	400	ES09FLZ
1/4" - 18 NPTF	1/4" - 18 NPTF	40	68	14	400	ES09FNLZ

MINI PRESS s.r.l.

40056 VALSAMOGGIA (BO) - ITALY

LOC. CREPELLANO - VIA G. DI VITTORIO 1 - 3

TEL. +39.051.6869070 . FAX +39.051.977842 . INFO@MINIPRESS.IT . WWW.MINIPRESS.IT