

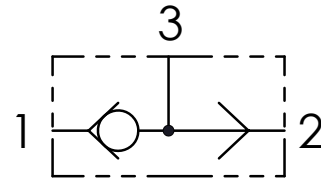


**CODICE ORDINAZIONE**  
ORDERING CODE

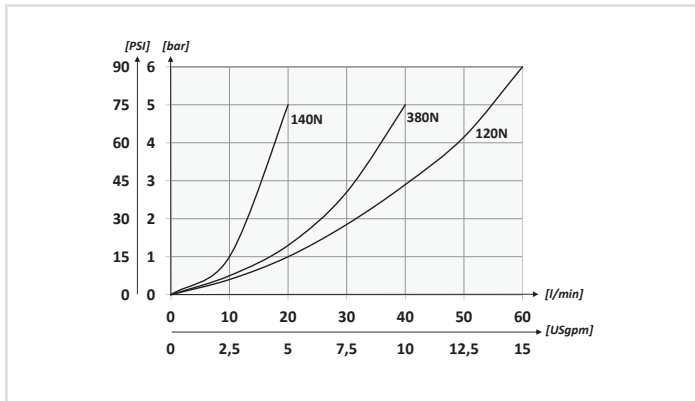
|             |    |
|-------------|----|
| 01          | 02 |
| <b>VUSF</b> |    |

|           |   |             |
|-----------|---|-------------|
| <b>01</b> | VALVOLE SELETRICI (LOAD SHUTTLE VALVES) | <b>VUSF</b> |
| <b>02</b> | DIMENSIONE<br>(SIZE)                    | BSPP 1/4    |
|           |   | BSPP 3/8    |
|           |   | BSPP 1/2    |

**SCHEMA IDRAULICO / HYDRAULIC CIRCUIT**



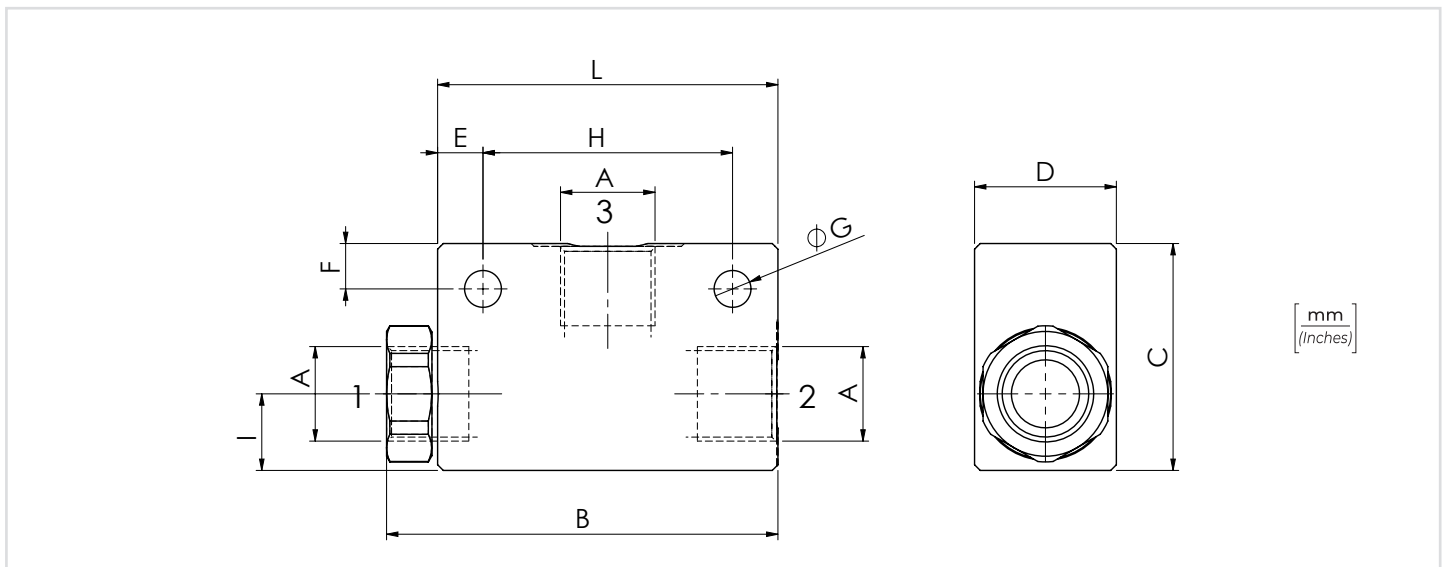
**PERFORMANCES**



**DATI TECNICI / TECHNICAL DATA**

|  |  |
|--|--|
| <b>Olio idraulico - Mineral oil</b>  | <b>ISO 6743/4 (DIN 51524)</b>                  |
| <b>Viscosità olio - Oil viscosity</b>  | <b>15-250 mm<sup>2</sup>/s (15 to 250 cSt)</b> |
| <b>Classe di contaminazione max con filtro<br/>Max contamination index with filter</b> | <b>ISO 4406:1999 Classe 19/17/14</b>           |
| <b>Temperatura dell'olio - Oil temperature</b>   | <b>-20°C +80°C -4°F +176°F</b>                 |
| <b>Temperatura ambiente - Environment temperature</b>                                  | <b>-20°C +50°C -4°F +122°F</b>                 |

È indispensabile l'utilizzo di un filtro per proteggere la valvola (filtrazione consigliata 15 µm)  
It is necessary a filter use to protect the valve (advised filtration 15 µm)



**CARATTERISTICHE TECNICHE / TECHNICAL CHARACTERISTICS**

| TIPO TYPE | A        | PORTATA MAX<br>MAX FLOW<br>l/min-USgpm | PRESSIONE MAX<br>MAX PRESSURE<br>bar-PSI | B           | C         | D         | E         | F         | G          | H         | I           | L         | PESO APPROX<br>APPROX WEIGHT<br>kg-lbt |
|-----------|----------|--|--|-------------|-----------|-----------|-----------|-----------|------------|-----------|-------------|-----------|--|
| VUSF140N  | BSPP 1/4 | 20 (5.3)                               | 350 (5075)                               | 57,3 (2.26) | 35 (1.38) | 25 (0.98) | 9 (0.35)  | 8 (0.31)  | 6,5 (0.26) | 34 (1.34) | 12 (0.47)   | 52 (2.05) | 0,29 (0.65)                            |
| VUSF380N  | BSPP 3/8 | 40 (10.6)                              |  | 69 (2.72)   | 40 (1.57) |           | 8 (0.31)  |           |            | 44 (1.73) | 13,5 (0.53) | 60 (2.36) | 0,37 (0.81)                            |
| VUSF120N  | BSPP 1/2 | 60 (15.8)                              |  | 73,8 (2.90) | 50 (1.97) | 35 (1.38) | 10 (0.39) | 10 (0.39) | 8,5 (0.33) | 45 (1.79) | 18 (0.71)   | 65 (2.56) | 0,71 (1.56)                            |