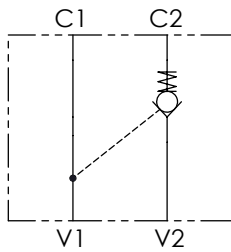




SCHEMA IDRAULICO / HYDRAULIC CIRCUIT

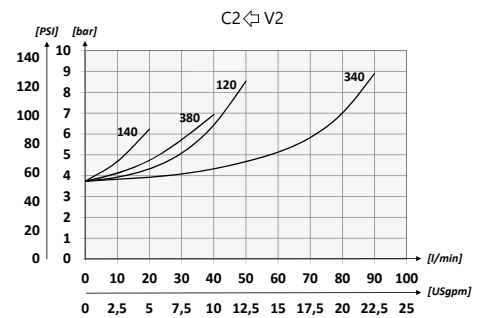
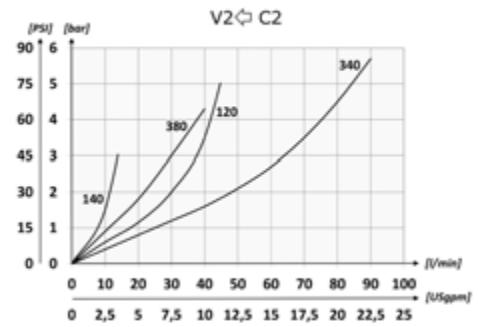


**CODICE ORDINAZIONE**  
ORDERING CODE

01	02
<b>VRSE</b>	

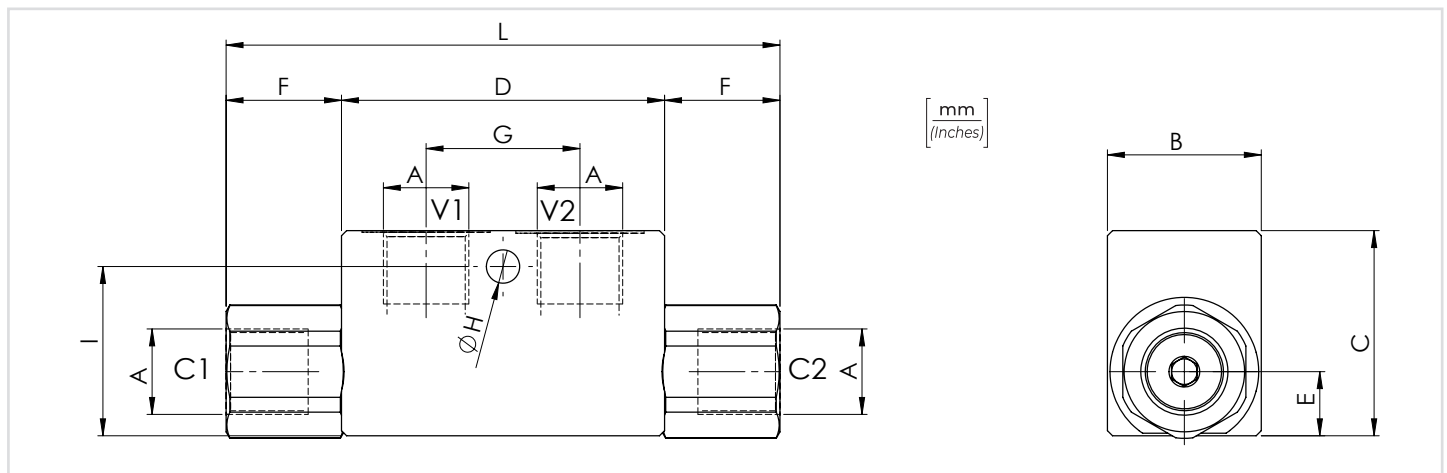
<b>01</b>	VALVOLE DI BLOCCO A SEMPLICE EFFETTO (SINGLE ACTING PILOT CHECK VALVES)	<b>VRSE</b>
<b>02</b>	DIMENSIONE (SIZE)	BSPP 1/4
		BSPP 3/8
		BSPP 1/2
		BSPP 3/4

**PERFORMANCES**



**DATI TECNICI / TECHNICAL DATA**

Olivo idraulico - Mineral oil	ISO 6743/4 (DIN 51524)
Viscosità olio - Oil viscosity	15-250 mm <sup>2</sup> /s (15 to 250 cSt)
Classe di contaminazione max con filtro Max contamination index with filter	ISO 4406:1999 Classe 19/17/14
Temperatura dell'olio - Oil temperature	-20°C +80°C -4°F +176°F
Temperatura ambiente - Environment temperature	-20°C +50°C -4°F +122°F
È indispensabile l'utilizzo di un filtro per proteggere la valvola (filtrazione consigliata 15 µm) It is necessary a filter use to protect the valve (advised filtration 15 µm)	
Trafilamento massimo Max leakage	0,25 cm <sup>3</sup> /min - 5 gocce/min 0,015 in <sup>3</sup> /min - 5 drops/min



**CARATTERISTICHE TECNICHE / TECHNICAL CHARACTERISTICS**

TIPO TYPE	A	PORTATA MAX MAX FLOW l/min-USgpm	PRESSIONE MAX MAX PRESSURE bar-PSI	B	C	D	E	F	G	H	I	L	PESO APPROX APPROX WEIGHT kg-lbt	RAPPORTO DI PILOTAGGIO PILOT RATIO
VRSE140	BSPP 1/4	15 (4)	350 (5075)	30 (1.18)	40 (1.57)	63 (2.48)	12,5 (0.49)	22,5 (0.89)	30 (1.18)	6,5 (0.26)	33 (1.30)	108 (4.25)	0,64 (1.41)	1:4
VRSE380	BSPP 3/8	35 (9.2)			50 (1.97)	82 (3.23)	16,5 (0.65)	31,5 (1.24)	36 (1.42)		35 (1.38)	145 (5.71)		
VRSE120	BSPP 1/2	45 (11.9)		35 (1.38)	50 (1.97)	82 (3.23)	16,5 (0.65)	31,5 (1.24)	36 (1.42)	6,5 (0.26)	35 (1.38)	145 (5.71)	1,08 (2.38)	
VRSE340	BSPP 3/4	70 (18.5)		40 (1.57)	60 (2.36)	100 (3.94)	22,5 (0.89)	46 (1.81)	50 (1.97)	8,5 (0.33)	50 (1.97)	192 (7.56)	2 (4.41)	