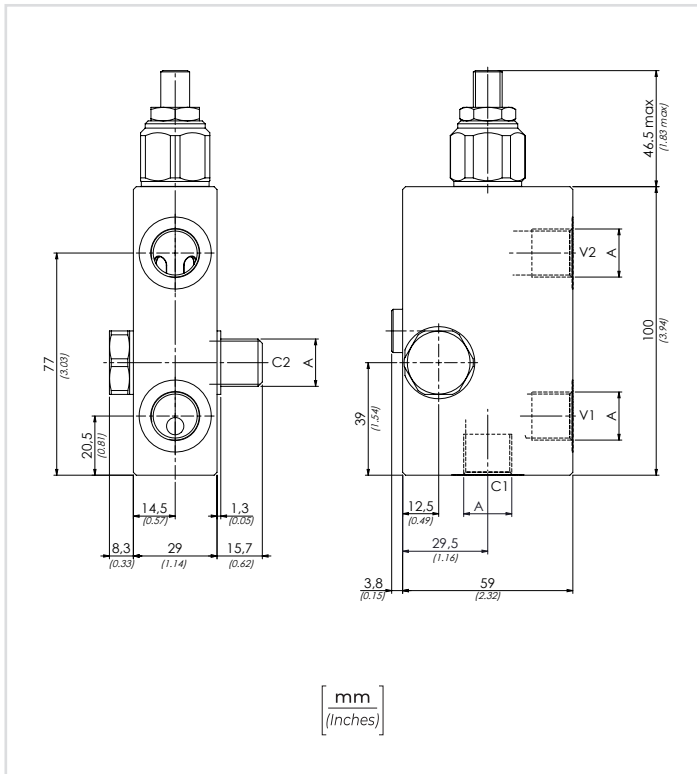
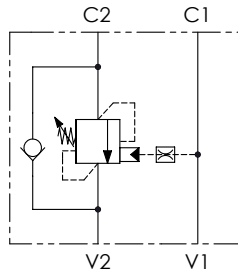




**SCHEMA IDRAULICO / HYDRAULIC CIRCUIT**



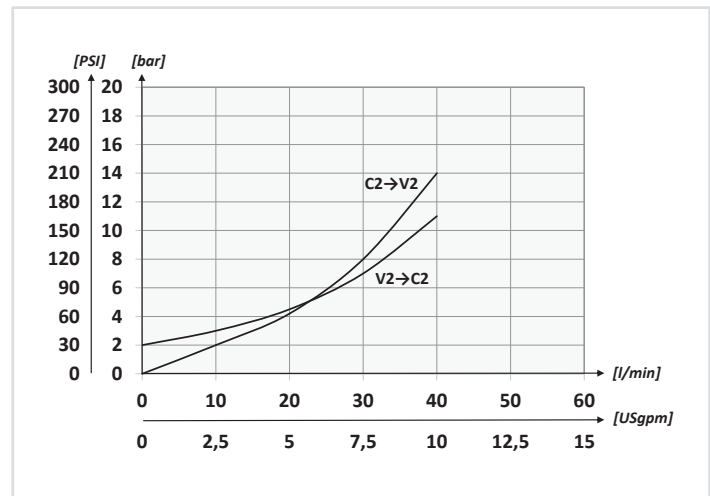
**DATI TECNICI / TECHNICAL DATA**

|  |   |
|--|---|
| Olio idraulico - Mineral oil   | ISO 6743/4 (DIN 51524)                    |
| Viscosità olio - Oil viscosity   | 15-250 mm <sup>2</sup> /s (15 to 250 cSt) |
| Classe di contaminazione max con filtro<br>Max contamination index with filter   | ISO 4406:1999 Classe 19/17/14             |
| Temperatura dell'olio - Oil temperature  | -20°C +80°C -4°F +176°F                   |
| Temperatura ambiente - Environment temperature   | -20°C +50°C -4°F +122°F                   |
| È indispensabile l'utilizzo di un filtro per proteggere la valvola (filtrazione consigliata 15 µm)<br>It is necessary a filter use to protect the valve (advised filtration 15 µm) |   |

|  |    |    |    |    |    |
|--|----|----|----|----|----|
| <b>CODICE ORDINAZIONE</b><br>ORDERING CODE | 01 | 02 | 03 | 04 | 05 |
| <b>VBCB 380</b>                            |    |    |    |    |    |

|           |   |   |   |   |             |
|-----------|---|---|---|---|-------------|
| <b>01</b> | VALVOLE DI BILANCIAMENTO SINGOLE A BULLONE PER CENTRO APERTO<br>(BOLT-FITTING SINGLE COUNTERBALANCE VALVES FOR OPEN CENTER) |   |   |   | <b>VBCB</b> |
| <b>02</b> | DIMENSIONE<br>(SIZE)  | BSPP 3/8  |   |   | <b>380</b>  |
| <b>03</b> | MOLLA<br>(SPRING)<br><b>30/210 bar</b><br>(435/3045 PSI)  | Rp 1:4.25                                       | <b>78 bar/al giro</b><br>(1131 PSI/turn)  | Taratura standard<br>(Std. setting)<br><b>Q=5 l/min 200 bar</b><br>(2900 PSI) | <b>1</b>    |
|           |   | Rp 1:8.75                                       | <b>160 bar/al giro</b><br>(2320 PSI/turn) |   |             |
| <b>03</b> | MOLLA<br>(SPRING)<br><b>60/350 bar</b><br>(870/5075 PSI)  | Rp 1:4.25                                       | <b>135 bar/al giro</b><br>(1958 PSI/turn) | Taratura standard<br>(Std. setting)<br><b>Q=5 l/min 350 bar</b><br>(5075 PSI) | <b>2</b>    |
|           |   | Rp 1:8.75                                       | <b>160 bar/al giro</b><br>(2320 PSI/turn) |   |             |
| <b>04</b> | MATERIALE<br>(MATERIAL)   | Acciaio + zincatura<br>(Steel + zinc-plating)   |   |   | <b>S</b>    |
|           |   | Acciaio + zinco-nichel<br>(Steel + zinc-nickel) |   |   | <b>K</b>    |
| <b>05</b> | RAPPORTO DI PILOTAGGIO<br>(PILOT RATIO)   | 1:4.25 Standard                                 |   |   | <b>/</b>    |
|           |   | 1:8.75  |   |   | <b>8</b>    |

**PERFORMANCES**



**CARATTERISTICHE TECNICHE / TECHNICAL CHARACTERISTICS**

| TIPO<br>TYPE   | A               | PORTATA MAX<br>MAX FLOW<br>l/min-USgpm | PRESSIONE MAX<br>MAX PRESSURE<br>bar-PSI | PESO APPROX<br>APPROX<br>WEIGHT<br>kg-lbt |
|----------------|-----------------|--|--|---|
| <b>VBCB380</b> | <b>BSPP 3/8</b> | <b>40 (10.6)</b>                       | <b>350 (5075)</b>                        | <b>1,24 (2.73)</b>                        |