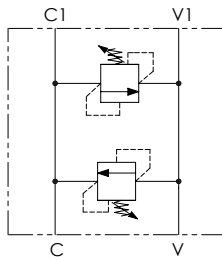


**CODICE ORDINAZIONE**  
ORDERING CODE

|            |            |    |
|------------|------------|----|
| 01         | 02         | 03 |
| <b>DCL</b> | <b>120</b> |    |

|           |                                                                                       |            |
|-----------|---------------------------------------------------------------------------------------|------------|
| <b>01</b> | VALVOLE ANTIURTO DOPPIE INCROCIATE<br>(DOUBLE CROSS LINE DIRECT ACTING RELIEF VALVES) | <b>DCL</b> |
| <b>02</b> | DIMENSIONE<br>(SIZE)                                                                  | <b>120</b> |
| <b>03</b> | MOLLA (SPRING)<br><b>10/90 bar</b><br>(145/1305 PSI) max                              | <b>1</b>   |
|           | MOLLA (SPRING)<br><b>20/210 bar</b><br>(290/3045 PSI) max                             | <b>2</b>   |
|           | MOLLA (SPRING)<br><b>70/350 bar</b><br>(1015/5075 PSI) max                            | <b>3</b>   |

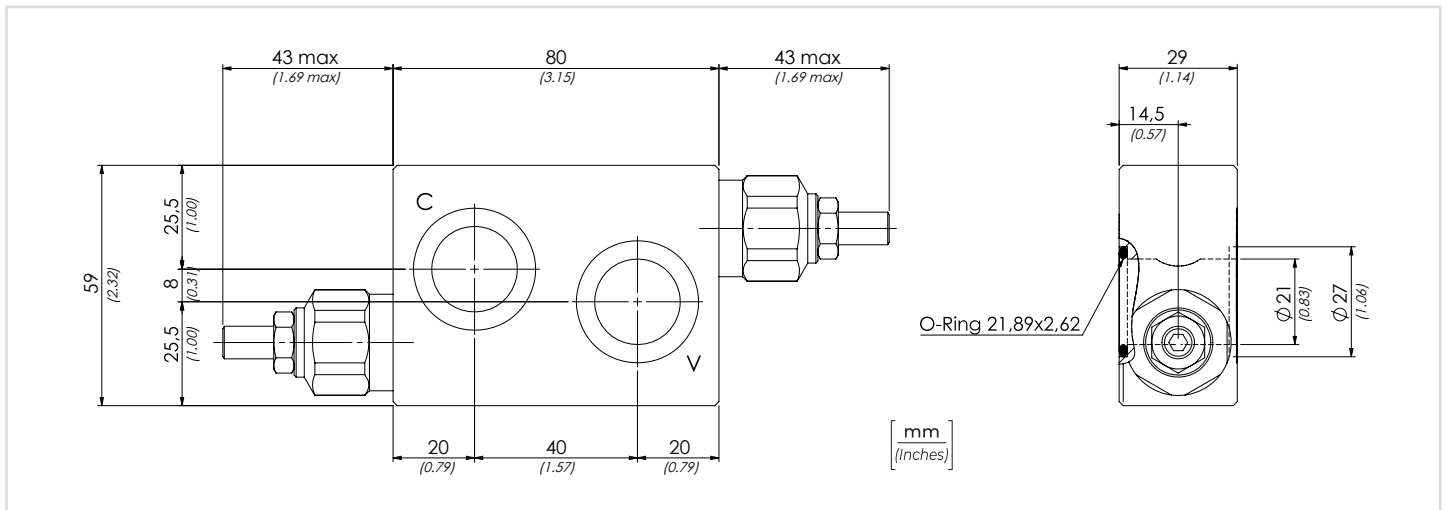
**SCHEMA IDRAULICO / HYDRAULIC CIRCUIT**



**DATI TECNICI / TECHNICAL DATA**

|                                                                                       |                                                |
|---------------------------------------------------------------------------------------|------------------------------------------------|
| <b>Olio idraulico - Mineral oil</b>                                                   | <b>ISO 6743/4 (DIN 51524)</b>                  |
| <b>Viscosità olio - Oil viscosity</b>                                                 | <b>15-250 mm<sup>2</sup>/s (15 to 250 cSt)</b> |
| <b>Classe di contaminazione max con filtro</b><br>Max contamination index with filter | <b>ISO 4406:1999 Classe 19/17/14</b>           |
| <b>Temperatura dell'olio - Oil temperature</b>                                        | <b>-20°C +80°C -4°F +176°F</b>                 |
| <b>Temperatura ambiente - Environment temperature</b>                                 | <b>-20°C +50°C -4°F +122°F</b>                 |

È indispensabile l'utilizzo di un filtro per proteggere la valvola (filtrazione consigliata 15 µm)  
It is necessary a filter use to protect the valve (advised filtration 15 µm)



**CARATTERISTICHE TECNICHE / TECHNICAL CHARACTERISTICS**

| TIPO<br>TYPE | A                  | PORTATA MAX<br>MAX FLOW<br>l/min-USgpm | PRESSIONE<br>MAX<br>MAX PRESSURE<br>bar-PSI | PESO<br>APPROX<br>APPROX WEIGHT<br>kg-lbt | VALVOLA<br>TIPO<br>TYPE<br>OF VALVE |
|--------------|--------------------|----------------------------------------|---------------------------------------------|-------------------------------------------|-------------------------------------|
| DCL120       | Ø 21<br>(BSPP 1/2) | 40 (10.6)                              | 350 (5075)                                  | 0,96 (2.11)                               | VMD40S                              |

**PERFORMANCES**

