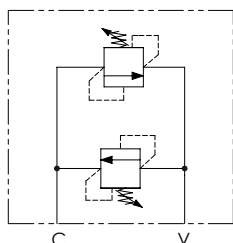




SCHEMA IDRAULICO / HYDRAULIC CIRCUIT



CARATTERISTICHE TECNICHE / TECHNICAL CHARACTERISTICS

TIPO TYPE	A	PORTATA MAX FLOW l/min-USgpm	PRESSIONE MAX MAX PRESSURE bar-PSI	B	C	PESO APPROX APPROX WEIGHT kg-lbt	VALVOLA TIPO TYPE OF VALVE
DCA140	BSPP 1/4	20 (5.3)	350 (5075)	22 (0.87)	6 (0.24)	0,8 (1.8)	VMD1N
DCA380	BSPP 3/8			20 (0.79)	10 (0.39)		

CODICE ORDINAZIONE ORDERING CODE

01	02	03
DCA		

01	VALVOLE ANTIURTO DOPPIE INCROCIATE (DOUBLE CROSS LINE DIRECT ACTING RELIEF VALVES)	DCA
02	DIMENSIONE (SIZE)	BSPP 1/4 140
		BSPP 3/8 380
03	MOLLA (SPRING) 10/40 bar (145/580PSI) max	20 bar/al giro (290 PSI/turn) 1
	Molla (SPRING) 20/110 bar (290/1595 PSI) max	40 bar/al giro (580 PSI/turn) 2
	MOLLA (SPRING) 30/210 bar (435/3045 PSI) max	70 bar/al giro (1015 PSI/turn) 3
	Molla (SPRING) 40/350 bar (580/5075 PSI) max	130 bar/al giro (1885 PSI/turn) 4

DATI TECNICI / TECHNICAL DATA

Olio idraulico - Mineral oil	ISO 6743/4 (DIN 51524)
Viscosità olio - Oil viscosity	15-250 mm ² /s (15 to 250 cSt)
Classe di contaminazione max con filtro Max contamination index with filter	ISO 4406:1999 Classe 19/17/14
Temperatura dell'olio - Oil temperature	-20°C +80°C -4°F +176°F
Temperatura ambiente - Environment temperature	-20°C +50°C -4°F +122°F

È indispensabile l'utilizzo di un filtro per proteggere la valvola (filtrazione consigliata 15 µm)
It is necessary a filter use to protect the valve (advised filtration 15 µm)

PERFORMANCES

