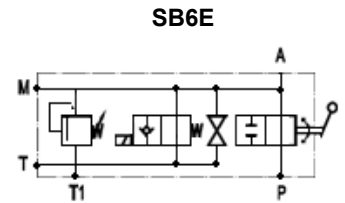
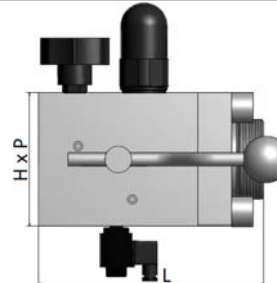
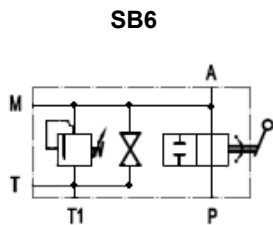
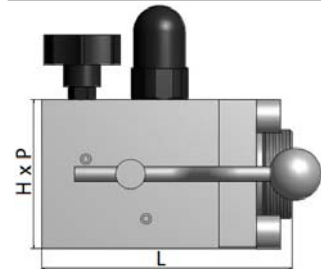
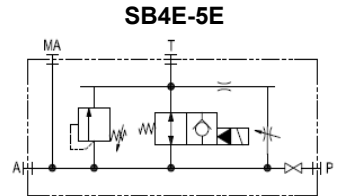
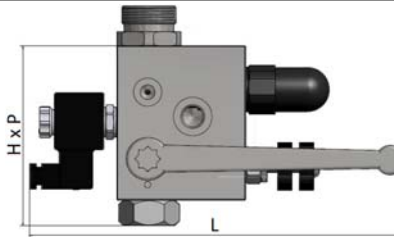
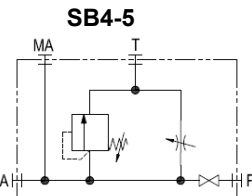
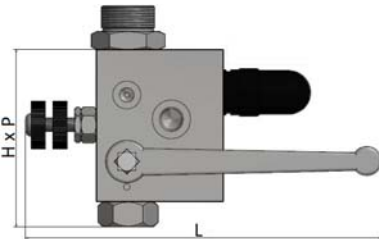
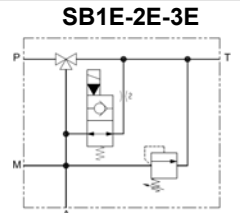
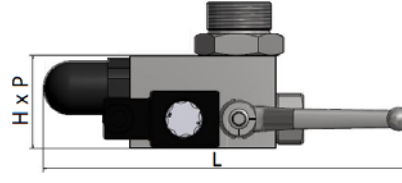
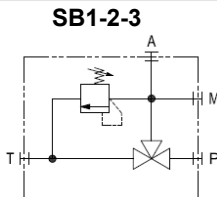
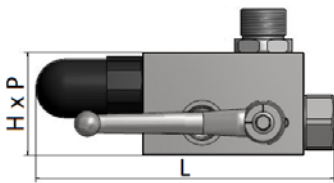
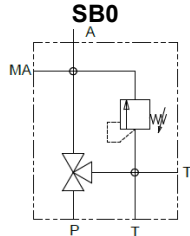
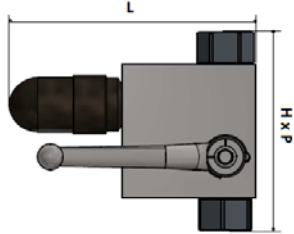


**Caratteristiche tecniche:**

Utile per proteggere l'accumulatore dalle sovrappressioni, è costruito con corpo in acciaio forgiato zincato (disponibile in inox su richiesta), pressione massima di 350 bar ed è composto da: valvola d'intercettazione, valvola di sicurezza, manopola di messa a scarico, predisposizione attacco manometro. Elettrovalvola certificata CE/PED alimentata a 24V in esecuzione N.A, temperatura di utilizzo standard -20/+80°C. E' disponibile in esecuzione N.C. o alimentazioni differenti, SB5/SB5E e SB6/SB6E disponibili con flange SAE o CETOP e valvola di sicurezza collaudata da terza parte

**Technical features:**

Useful to protect the accumulator from overpressure, it is made with a galvanized forged steel body (available in stainless steel on request), maximum pressure of 350 bar and is composed by: on-off valve, pressure safety valve, discharge knob, predisposition hole for pressure gauge. Electrovalve CE/PED certified, power standard supply 24V, N.O. execution, standard operating temperature -20/+80°C. Is available in N.C. execution or different power supplies, SB5/SB5E and SB6/SB6E available with SAE or CETOP flanges and safety valve tested by a third party



Tipo	Esecuzione	Accumulatori FOX consigliati	Connessione idraulica lato accumulatore	Connessione idraulica lato impianto	Diametro luce di passaggio	Portata	Dimensioni (mm)			Taratura valvola sicurezza
							L	H	P	
Type	Execution	FOX recommended accumulators	Hydraulic Connection Accumulator's side	Hydraulic Connection Installation's side	Hole diameter for fluid	Flowrate	Dimension (mm)			Pressure safety valve setting
SB0	Manuale Manual	Volumi da 0,05l a 10l Volume from 0.05l to 10l	1/2" BSP-M	1/2" BSP-F	8mm	50 l/min at ~10 m/s	146	98	40	Indicare il valore di taratura della valvola di sicurezza in Bar  Indicate the pressure value for safety valve in Bar
SB1	Manuale Manual		3/4" BSP-M	1/2" BSP-F	10 mm		180	60	60	
SB1E	Elettrica Electrical		3/4" BSP-M	1/2" BSP-F	10 mm		225	60	60	
SB2	Manuale Manual		1 1/4" BSP-M	1/2" BSP-F	10 mm		180	60	60	
SB2E	Elettrica Electrical		1 1/4" BSP-M	1/2" BSP-F	10 mm		225	60	60	
SB3	Manuale Manual		Volumi da 10l a 50l Volume from 10l to 50l	2" BSP-M	1/2" BSP-F		10 mm	180	60	
SB3E	Elettrica Electrical	2" BSP-M		1/2" BSP-F	10 mm	225	60	60		
SB4	Manuale Manual	Volumi da 2,5l a 10l Volume from 2,5l to 10l	1 1/4" BSP-M	3/4" BSP-F	20 mm	190 l/min at ~10 m/s	255	140	70	
SB4E	Elettrica Electrical		1 1/4" BSP-M	3/4" BSP-F	20 mm		310	140	70	
SB5	Manuale Manual	Volumi da 10l (con attacco 2") a 50l Volume from 10l (with connection 2") to 50l	2" BSP-M	3/4" BSP-F	20 mm		255	140	70	
SB5E	Elettrica Electrical		2" BSP-M	3/4" BSP-F	20 mm		310	140	70	
SB6	Manuale Manual		2" BSP-M	1 1/2" BSP-F	32 mm		295 l/min at ~6 m/s	168	100	
SB6E	Elettrica Electrical		2" BSP-M	1 1/2" BSP-F	32 mm			168	100	120